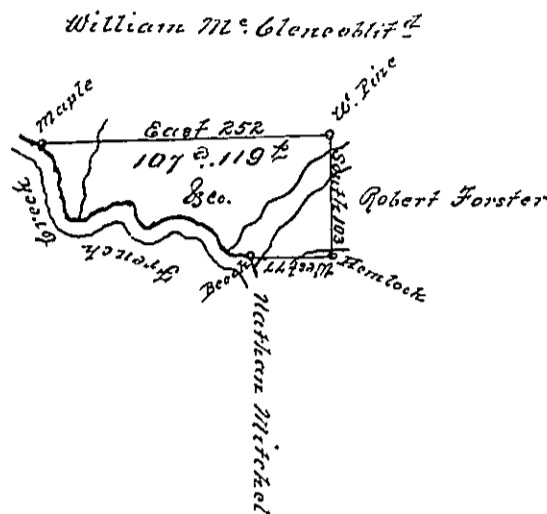


The Improvement contains about eight acres with a house stable & some fruit trees, the settlement was commenced in May 1797 and is continued.



Courses up the Creek

- 70.64° W. 21
- 70.33° W. 25
- 70.67° W. 24
- 70.85° W. 34
- 70.39° W. 30
- 70.62° W. 18
- 70.80° W. 26
- 70.5° W. 28
- 70.28° W. 12
- 70.45° W. 26

A Draught of a Tract of Land situate on the East side of French Creek in Waterford Township Erie County Surveyed the 21<sup>st</sup> day of May 1816 for Nathan Brown on his Warrant bearing date the 25<sup>th</sup> day of January 1815 Containing one hundred & seven acres & one hundred & nineteen perches & the allowance of Six per Cent &c.

Jonah Cowgill D.S.

To Rich<sup>d</sup>. L. Leach Esq<sup>r</sup>  
Surveyor General

IN TESTIMONY that the above is a copy of the original remaining on file in the Department of Internal Affairs of Pennsylvania, made conformably to an Act of Assembly approved the 16th day of February, 1833, I have hereunto set my Hand and caused the Seal of said Department to be affixed at Harrisburg, this

Ninth day of April 1891

*Thos. J. Stewart*  
Secretary of Internal Affairs